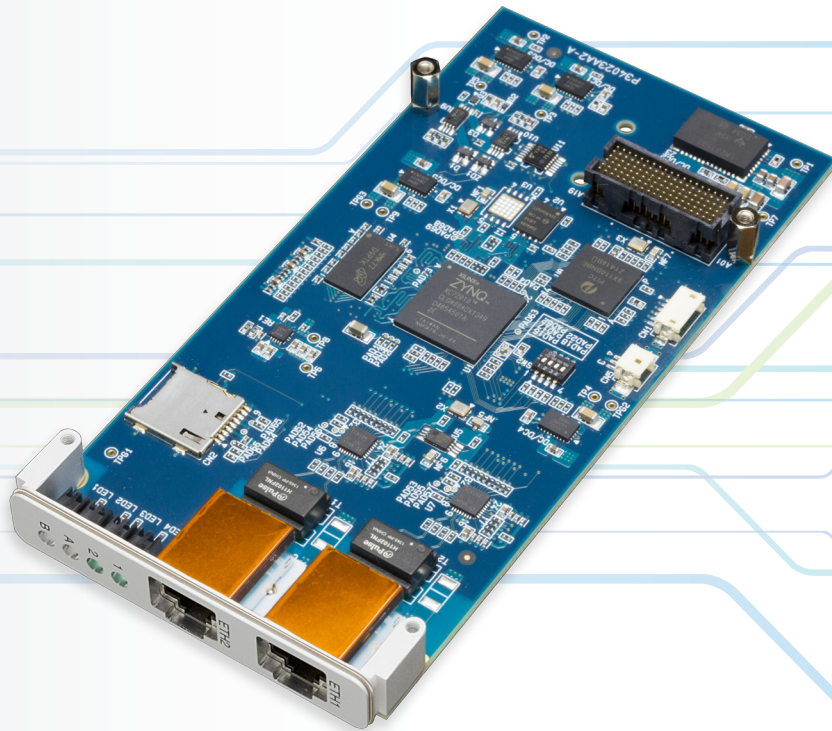


AdXMC1573



FEATURES

- **ARM® Cortex®-A9 Dual-Core**
(Xilinx® Zynq®-7010)
- **EtherCAT® Master ClassA Support**
- **EtherCAT® Feature Pack Support**
Secure Cable Redundancy / Hot Connect Capability
- **Fast Ethernet 2 Ports**
- **Operating Temperature: 0°C ~ 55°C**
- **RoHS Compliant**
- **OS: Wind River® VxWorks® 6.9.x**
Microsoft® Windows® 7, 10

AdXMC1573 is a XMC module which has the EtherCAT® master communication function.

CPU works as an intelligent XMC module with Xilinx Zynq® ARM® Cortex®-A9.

As EtherCAT® master protocol stack, "EC Master" with ClassA compatible of acontis technologies is installed. Secure cable redundancy and hot connect capability are supported by EtherCAT® feature pack.

AdXMC1573 is controlled by host CPU. The data is transferred through the shared memory which is installed in AdXMC1573.

With working as an intelligent slave, AdXMC1573 realizes EtherCAT® master communication minimizing the impact for the host CPU.

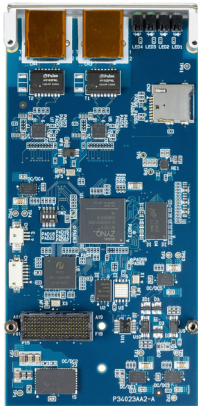


Advanet

A member of Eurotech Group

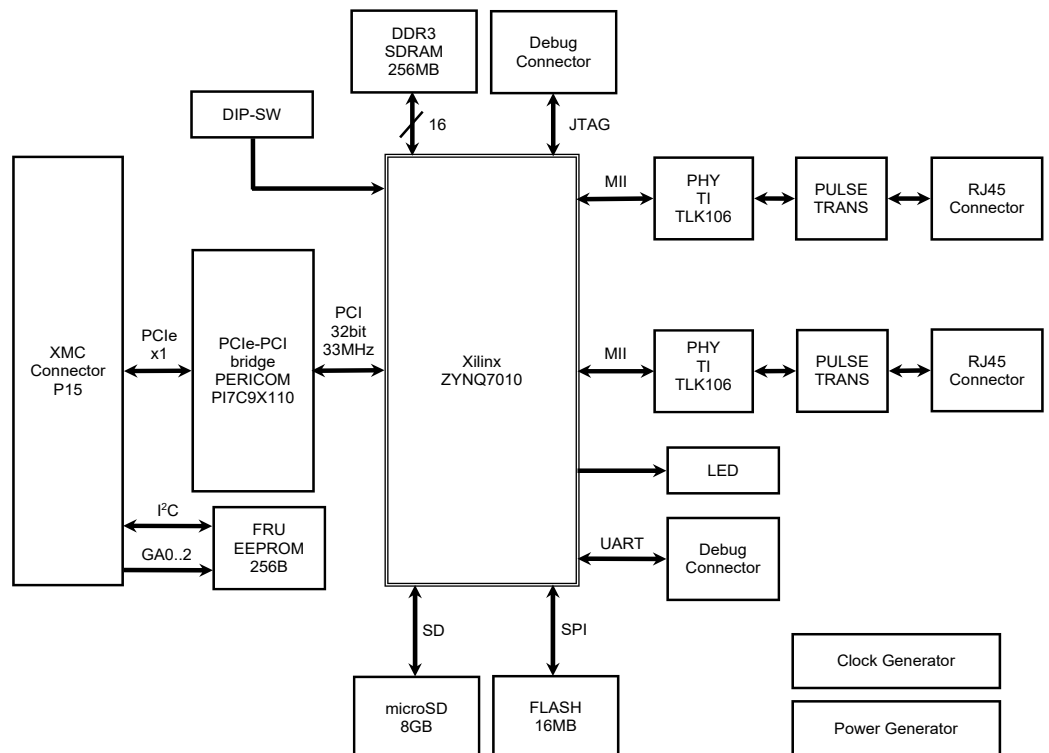
Specifications

Main Specification



CPU	Processor Operating Frequency	ARM® Cortex®-A9 Dual Core (Xilinx® Zynq®-7010) 666MHz
Memory	Main Memory Boot ROM 1 Boot ROM 2 Shared Memory	DDR3 SDRAM 256MB SPI-FLASH 16MB microSD (Spare) 256kB (Zynq® PL Built-in)
EtherCAT®	Classification Feature Pack Periodic Update	ClassA Compatible Secure Cable Redundancy / Hot Connect Capability Configurable at 100us ~ 10ms
Front I/O	EtherCAT® LED	2 Ports, 100BASE-TX, RJ45 Connector (PHY: TI TLK106) *This board cannot be used as EtherCAT® communication port because it is dedicated EtherCAT®. EtherCAT® LINK / LED for ACT lamp x2 EtherCAT® Status Lamp 2 Colors LED x2
On-Board I/O	JTAG UART	1 Port for Debug 1 Port for Debug
Bus Interface	Standard	IEEE 1386.1-2001 ANSI / VITA42.3-2006 PCI Express Base Specification Revision 1.0a
	Link Width PCIe - PCI Bridge	X1 lane (2.5 Gbps / lane) PERICOM PI7C9X110BNE
Power	Supply Voltage	DC 12V ±5% (Power Feeding from XMC Connector) DC 3.3V ±0.3V (Power Feeding from XMC Connector)
	Consumption Current	DC 12V, 0.21A (Typ), 0.27A (Max) *Theoretical Maximal Value DC 3.3V, 0.30A (Typ), 1.35A (Max) *Theoretical Maximal Value
Mechanical Spec.	Dimension	74.00mm x 149.00mm
	Weight	75g
Operating Env.	Operating Temp. Range	0°C ~ 55°C
	Operating Hum. Range	35% ~ 80% RH (Non-condensing)
	Non-Operating Temp. Range	-10°C ~ 70°C
	Non-Operating Hum. Range	Not greater than 90% RH (Non-condensing)
	RoHS	Compliant
Device Driver	OS	Wind River® VxWorks® 6.9.x, Microsoft® Windows® 7, 10

Block Diagram



Contact: sales@advanet.jp

*Specifications are subject to change without notice.